



Kanton Basel-Stadt

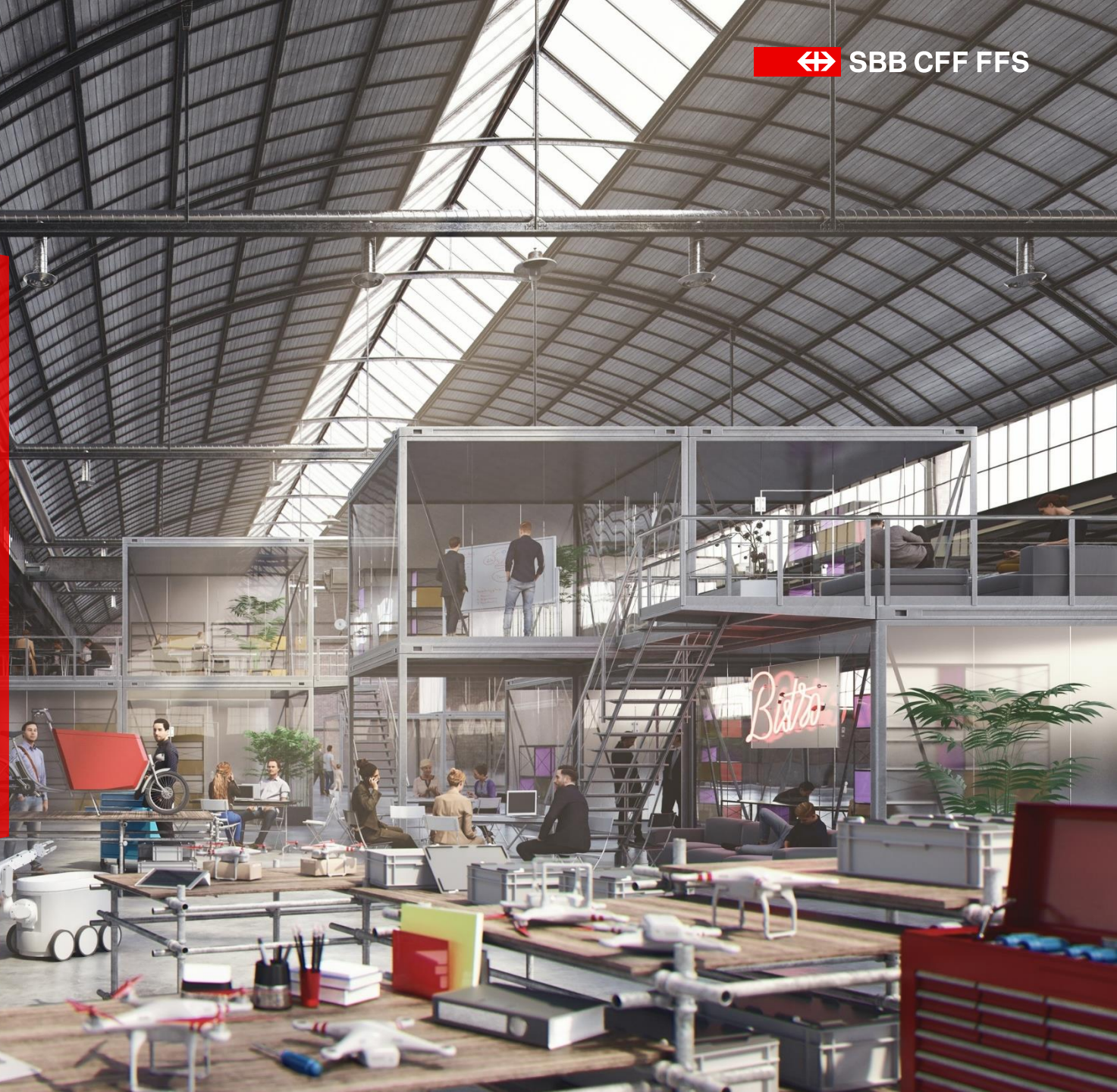


SBB CFF FFS

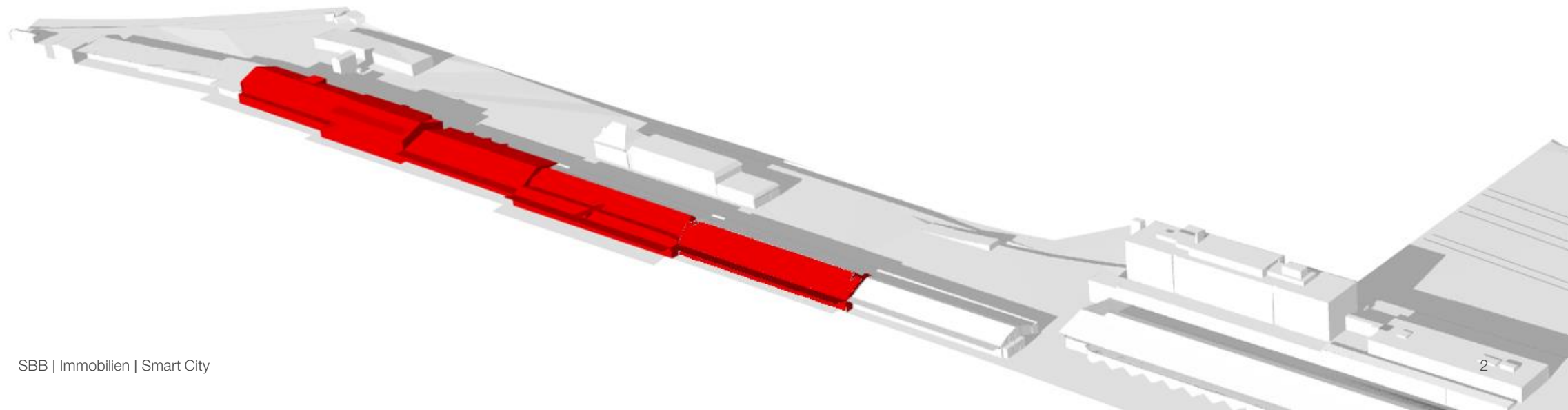
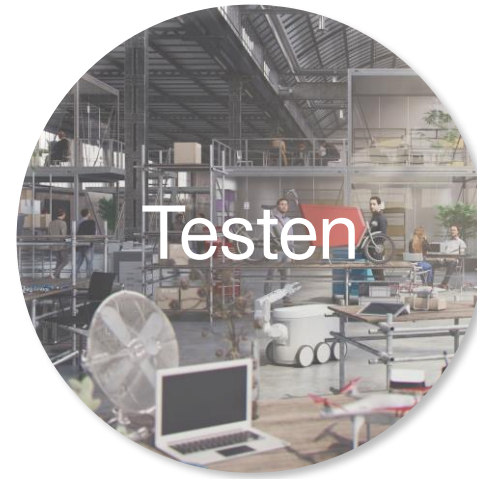
Smart City Lab Basel: Von der Idee zur Innovation.

Anja Riedle, Leiterin Smart City, SBB AG
YouTube, 22.06.2021

smartcitylabbasel.ch |  Smart City Lab Basel



Unsere Mission.





Aktuell engagieren sie 60+ Partner aus Wirtschaft,
Wissenschaft und Verwaltung in 40+ Pilotprojekten.



Danke.

smartcitylabbasel.ch |  Smart City Lab Basel

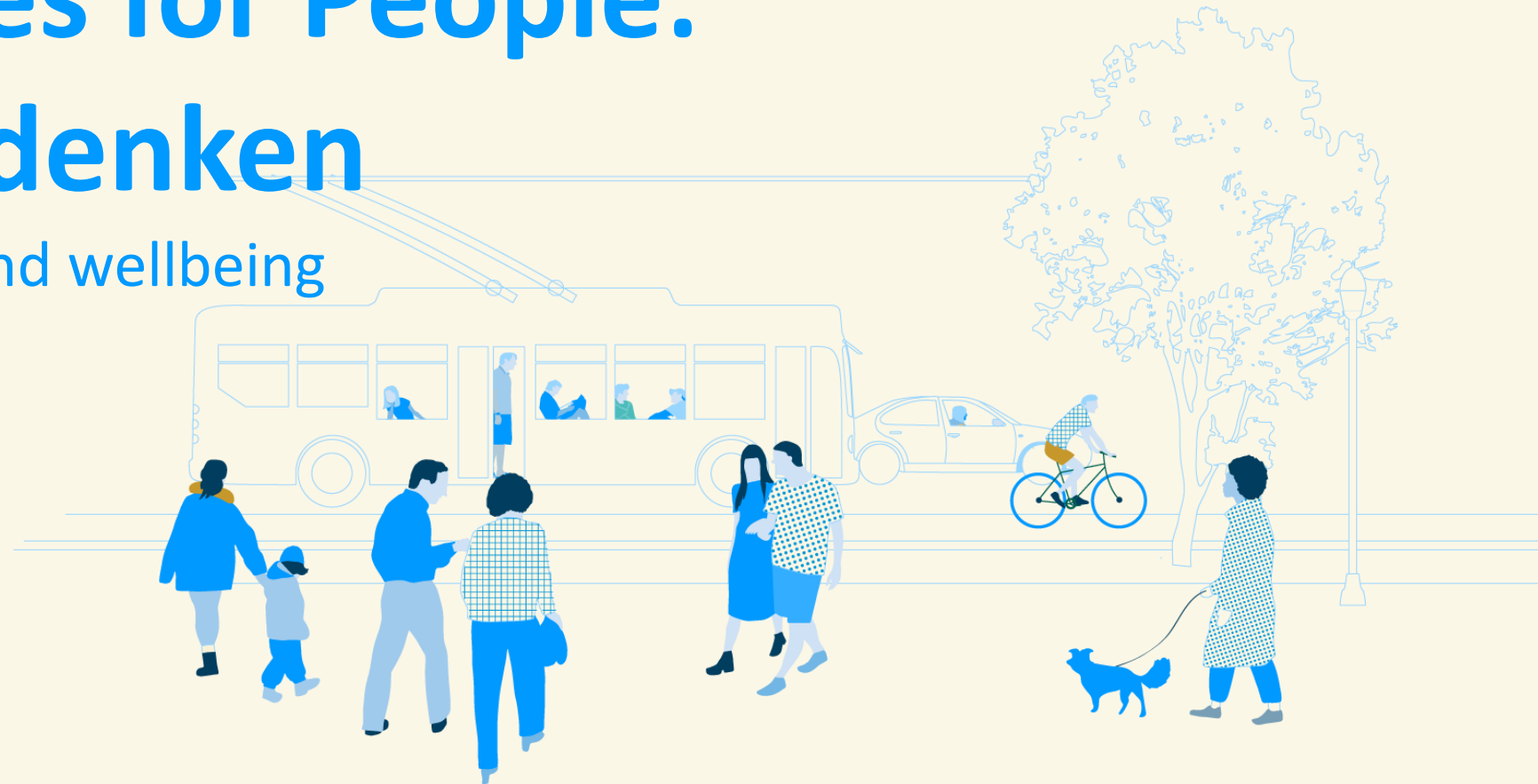
By Helle Sørholt

Founding Partner, CEO

Architect MAA, M. Arch

Making Cities for People: Städte neu denken

Using data for health and wellbeing
in times of COVID



Gehl

Gehl are **urban strategists and designers, who put people first.**

We work in cities around the world **to make places more equitable, healthy and sustainable.**



Copenhagen

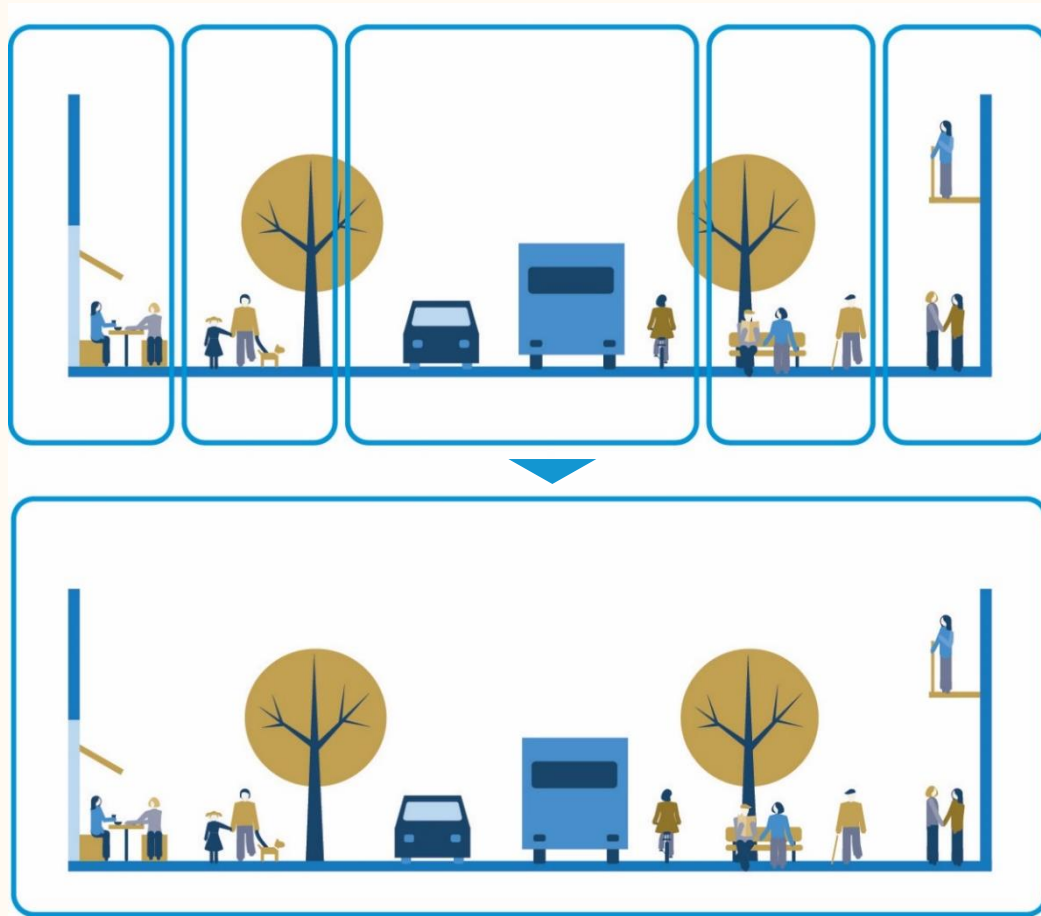


San Francisco



New York

Delivering a City for People



From
optimizing
individual
systems

To delivering
sustainable,
people first
design and
experiences



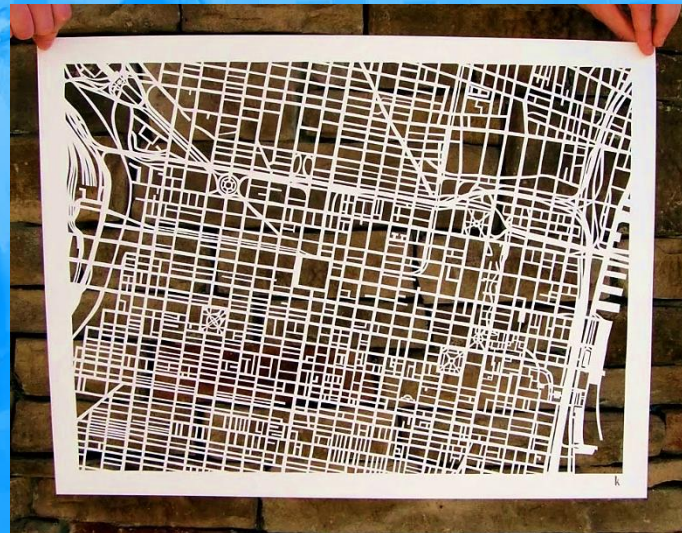
1

Public spaces are more important than ever.

Covid has accelerated the needed transformation.

From 20th century focus on systems ...

... to 21st century focus on people & place



We convert BIG DATA to THICK DATA

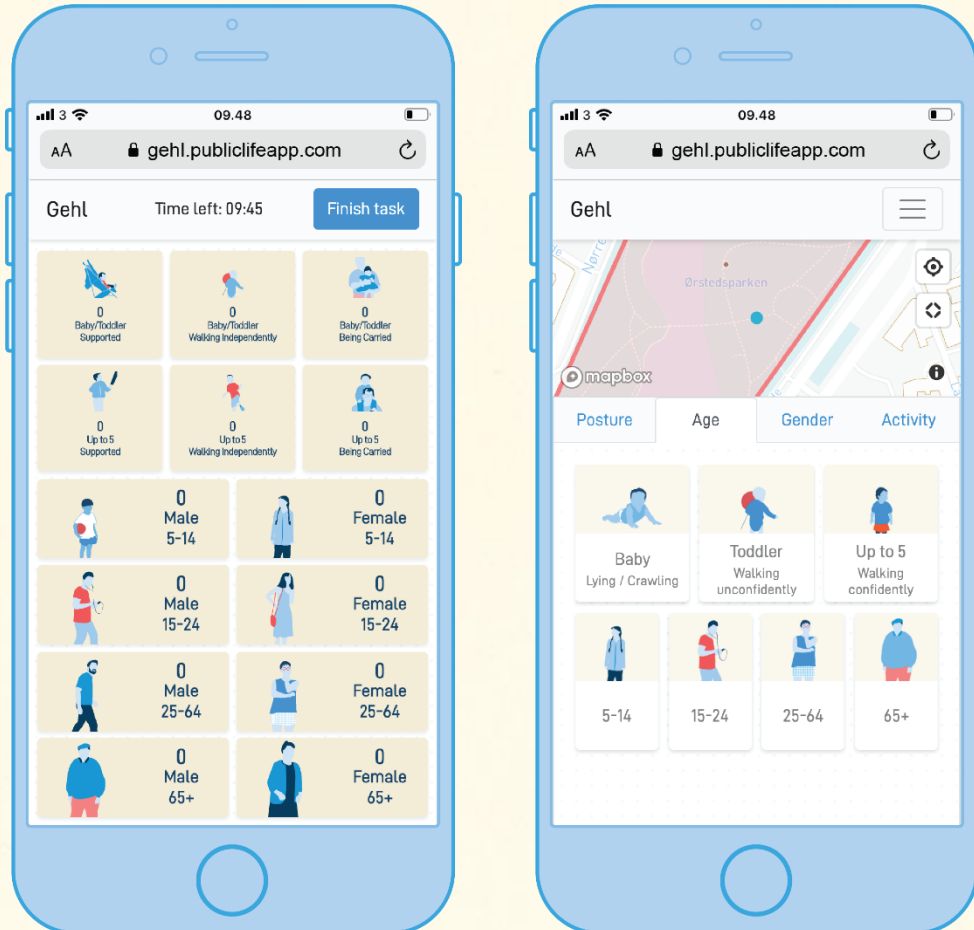
Technologies change but behaviour is human



DATA – INSIGHTS

We are giving large data sets a social context

www.Gehlpeople.com
covid19.gehlpeople.com

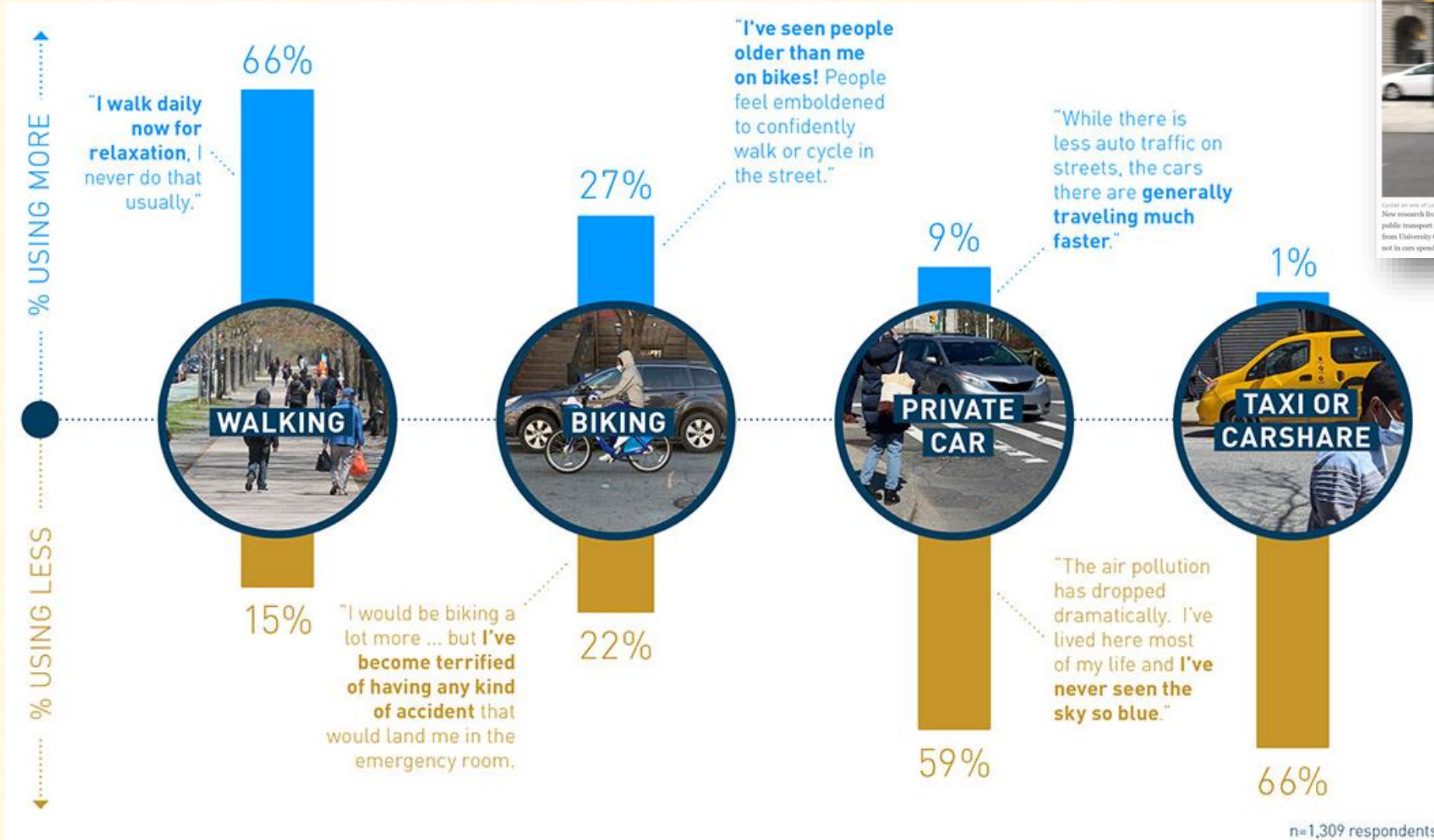


Key findings during lock down

- City centres are struggling due to drop in activities
- Neighbourhoods have increased activity levels
- Public spaces & parks are a necessary relief
- Mobility changed – car traffic is up but ped. & cycling more
- More children, families and elderly are outdoors
- Cities have cleaner air
- New citizen skills are developing
- Vulnerable Communities are at higher risks

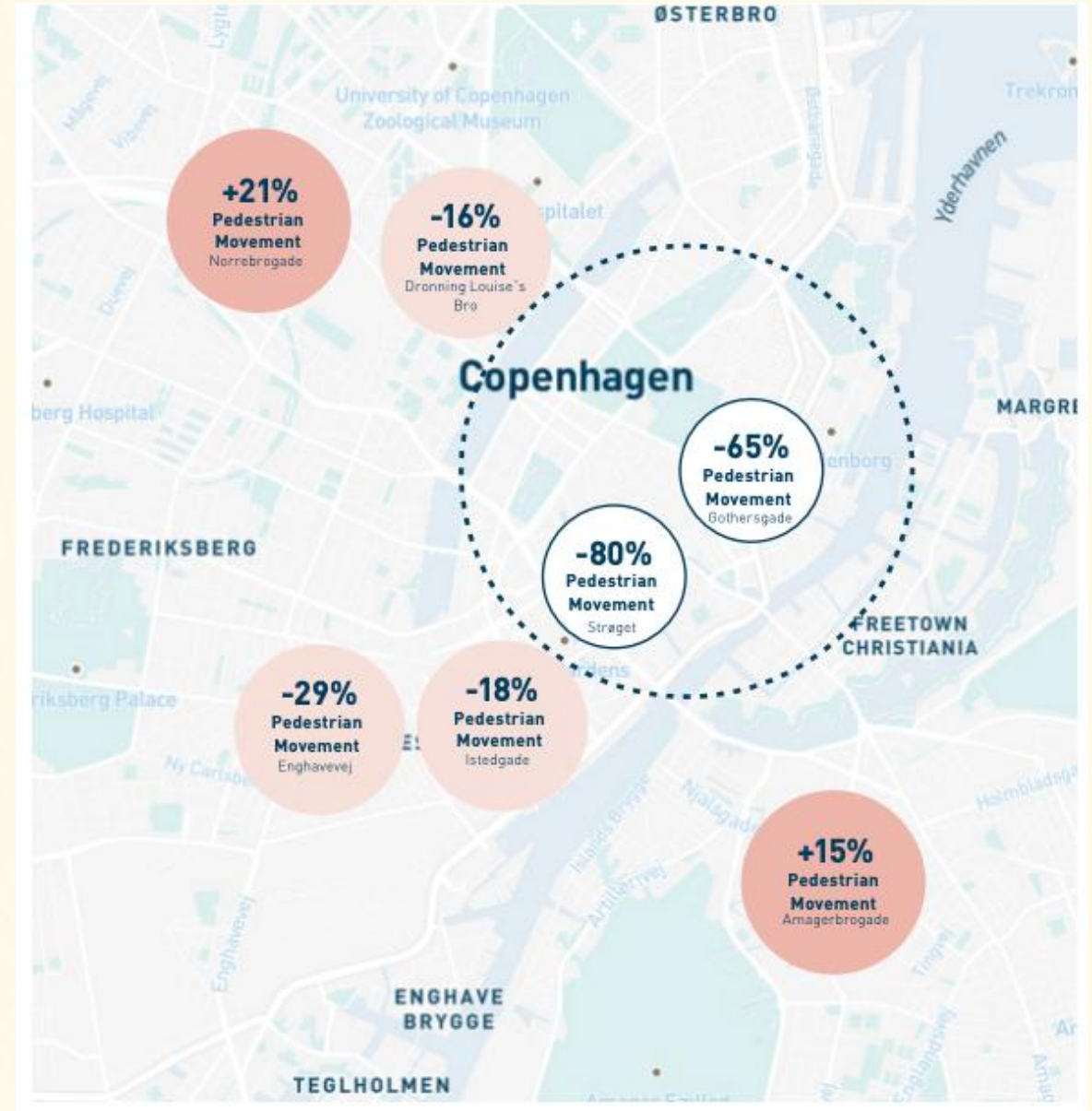
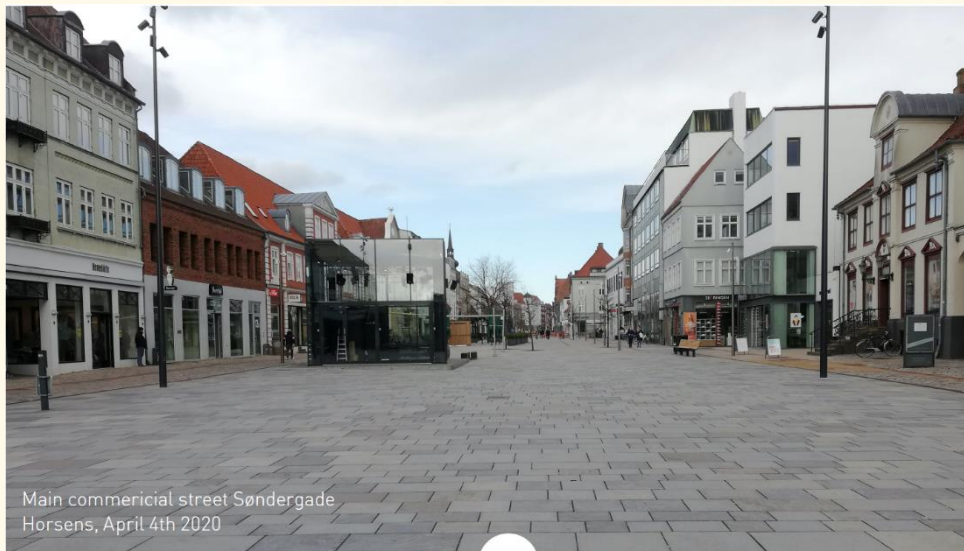
Covid-19

People are walking & biking more and using less cars



Decreased activity in the city center, but not overall in the city...

- - 80% Copenhagen
- - 96% Horsens



George
Street
Sydney

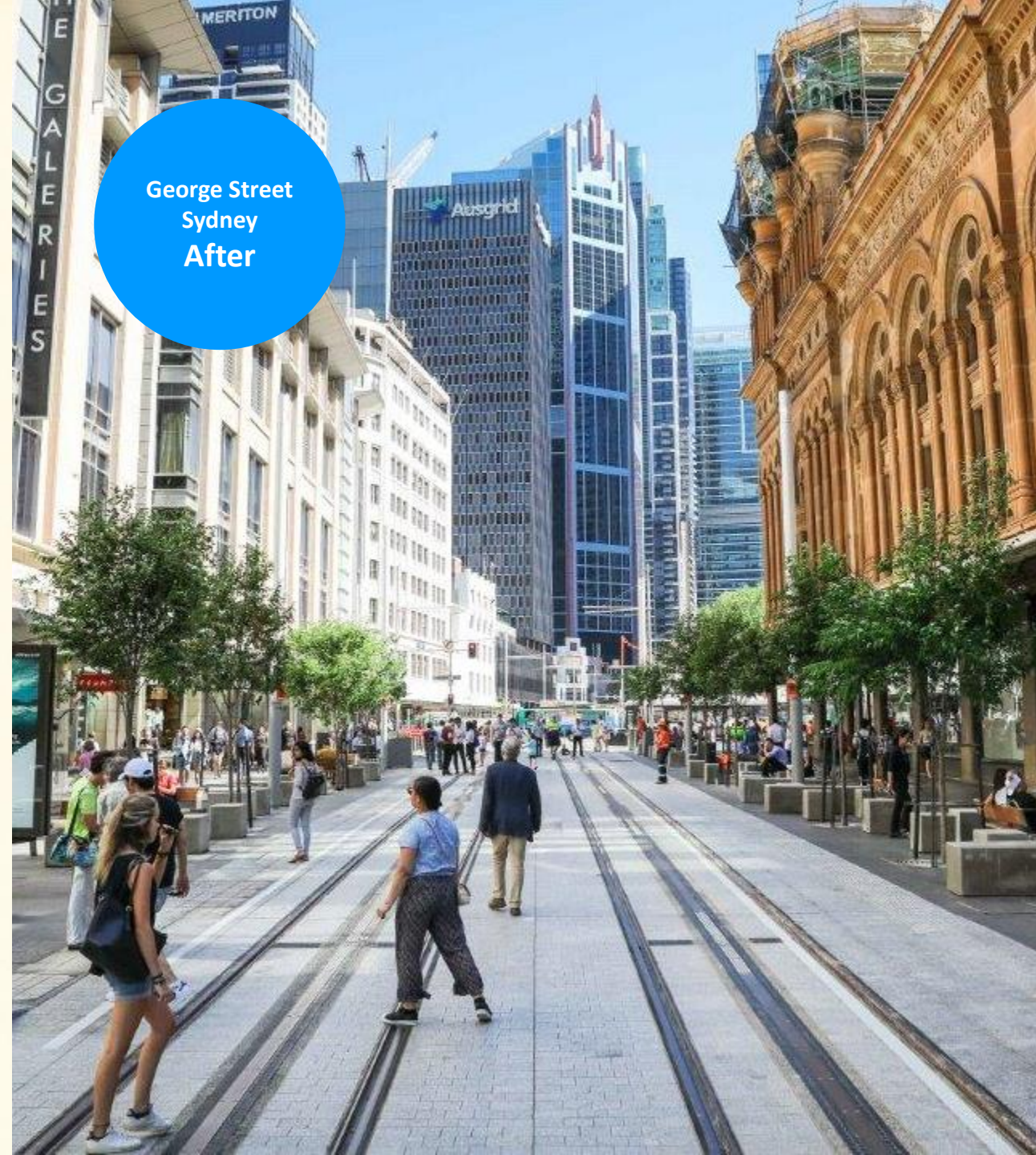
Before



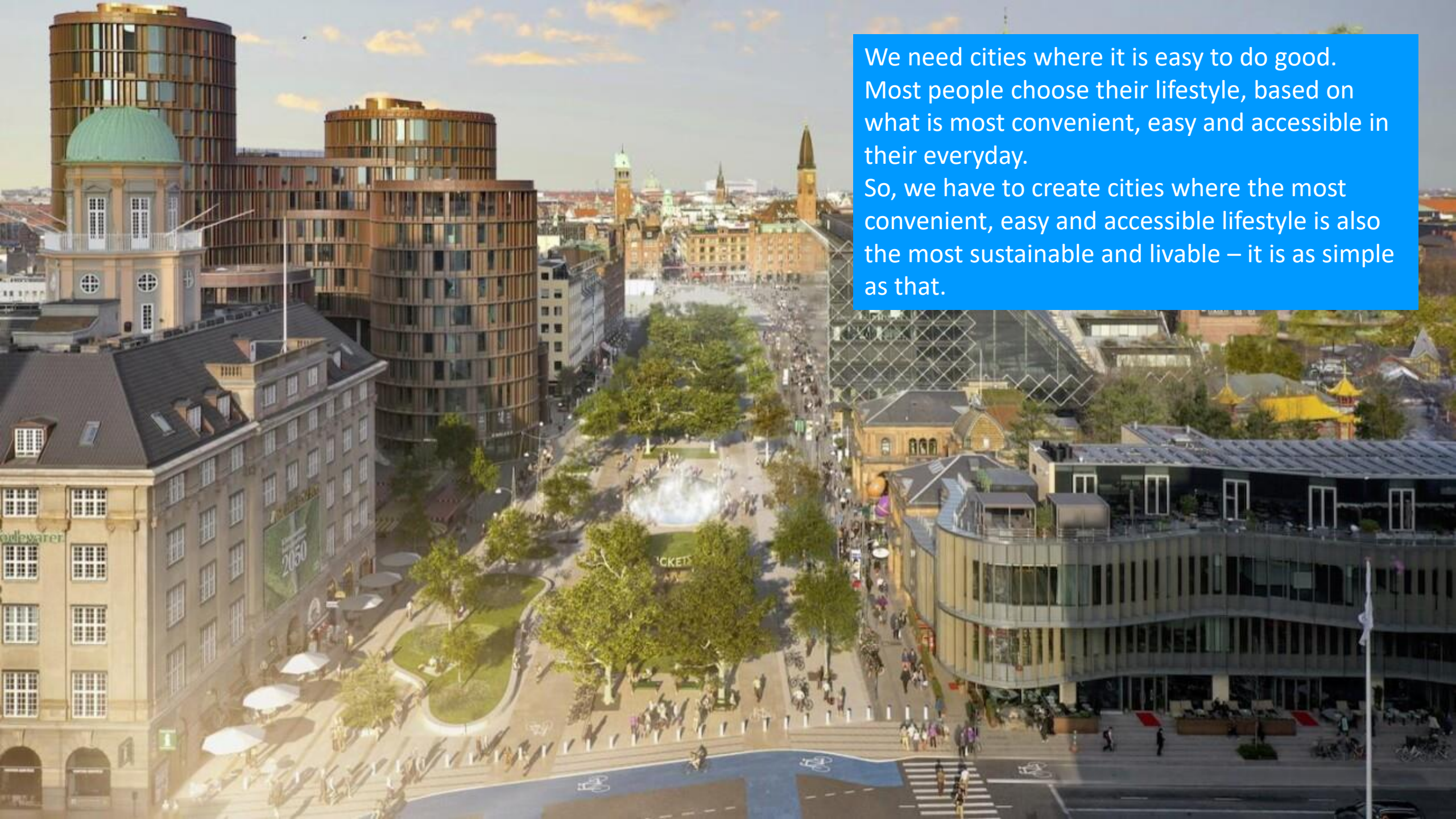
George Street
Sydney
Before



George Street
Sydney
After



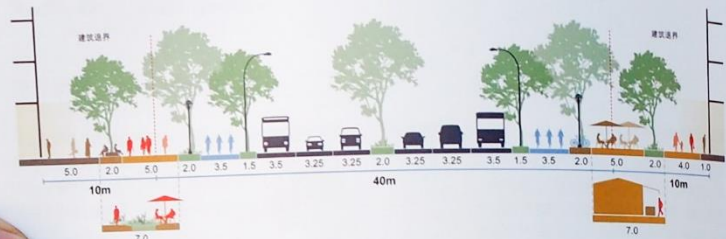




We need cities where it is easy to do good. Most people choose their lifestyle, based on what is most convenient, easy and accessible in their everyday. So, we have to create cities where the most convenient, easy and accessible lifestyle is also the most sustainable and livable – it is as simple as that.

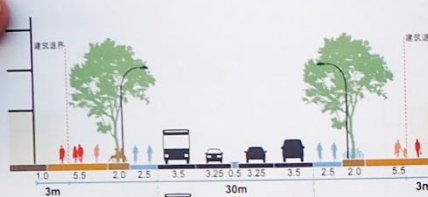
Urban Strategy
Shanghai
Street Design
Guidelines

推荐街道断面 Recommended sections



对于较宽的人行道进行分区利用，可设置雨水花园改善街道景观，或利用较宽的退界设置售货亭等临时设施，以提高店铺密度。较宽的人行道应增加行道树对行人活动区域进行遮阳。

For relatively wide sidewalks, they can be divided for different uses. Set up rainwater garden to better street landscape or use wide setback spaces to set up temporary facilities such as kiosks improve shop density. For relatively wide sidewalks, more street trees should be planted to provide tree shades over pedestrian areas.

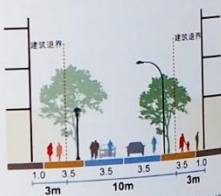


通过取消中分带保持空间紧凑，结合路中人行横道局部缩窄机动车道宽度并设置安全岛，引导机动车减速慢行，提升过街的安全性及便捷性。

Make the space impact by cancelling the middle greenbelts. With pedestrian crossings in the middle of the road, decrease the width of the motor vehicle lanes at some places and set up the safety island. Guide motor vehicles to slow down to improve the safety and convenience for pedestrians to across the street.

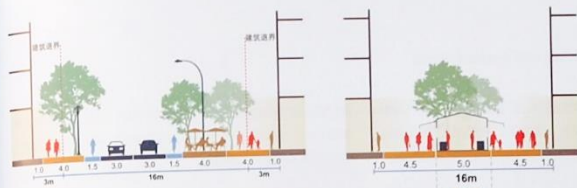


结合断面变化，提供少量机动车临时停车位。 Provide space for the temporary parking of motor vehicles.



采用共享街道模式，通过允许机动车进入提高沿街商业的可见性与可达性。同时营造安全、舒适的步行与骑行环境。

Adopt shared space model which allows for motor vehicles and improve visibility and accessibility for the commerce along the street. Meanwhile, foster a safe and comfortable walking and cycling environment.



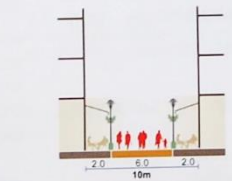
步行街可在中间设置零售摊位，增加商业界面，丰富步行街活动。

For a pedestrian street, stalls for retailing can be set up in the middle to diversify commercial interfaces and enrich the activities on the street.



在街道两侧设施带与活动空间较为充足时，结合非对称断面设置水平偏移，形成小型沿街广场绿地作为活动休憩节点。

When there is enough space for facility belts and activities along the street, form a resting node for small-scale square greenbelts with horizontally displaced asymmetric cross-section.



沿街设置室外餐饮及商品展示区域。

Provide areas for outdoor food and commodity display along streets.

设计要素 Design elements



商业、办公和居住等功能混合设置，创造7天24小时活力街区，而不只是白天活跃；创造多样化的建筑界面；沿街建筑界面和街道的互动。

沿街积极的退界空间

良好的交流空间

沿街设置的公共座椅

同一平面上的过街设施

完善的公共信息，与站相衔接

街道空间中的娱乐和游戏元素

座椅和地面铺装对营造整体氛围和引导方向起着重要作用

便利的人行通道

商店关门后，仍有照明设施；照明设施使用太阳能充电

非机动车道以及结合重要出行目的地设置非机动车停放设施

A wide-angle photograph of the Shanghai Riverfront. On the left is a multi-story brick building with many windows. In the foreground is a wide, empty paved area. A low concrete wall runs along the left side of the paved area. In the middle ground, there is a traditional Chinese pavilion with a yellow roof. A black metal railing with several black lamp posts runs along the edge of the paved area. In the background, the Shanghai skyline is visible, including the Oriental Pearl Tower, the Shanghai Tower, and the Shanghai World Financial Center. The sky is overcast and hazy. A blue speech bubble is overlaid on the top left of the image, containing the text 'Shanghai Riverfront' and 'Before'.

Shanghai
Riverfront

Before

Nanjing Rd East
Before



Gehl

Nanjing Rd
East

After



Gehl

Nanjing Rd
East

After

Gehl



2

Health and well-being is once again
in the centre of planning & design

Mobility is about access, meeting
places and inclusion

Physical Health

5 million
annual deaths
globally
from inactivity

James F Sallis, Jens Troelsen, et al., "Physical activity in relation to urban environments in 14 cities worldwide: a cross-sectional study." Lancet (2016)



Happiness & Well-being

Removing
1 hour from your
commute is
the equivalent
happiness of a
40%
pay increase

Stutzer and Frey. "The Stress That Doesn't Pay: The Commuting Paradox". Institute for the Study of Labour, University of Zurich (2004)



Greater Social Cohesion, Less Social Isolation

Weak social connections have health effects similar to smoking 15 cigarettes a day, and a greater negative effect than obesity



Leaders in cities and mobility companies are not managers of departments or agencies ...

... but curators, facilitators and guardians of public life



Economic Value

Environmental Sustainability

Happiness & Mental Health

Better Health

Community Cohesion

Public Safety

Integrated mobility

3

Covid also represents positive side effects – localism

- Improved air quality locally
- Better health access locally
- Living & working locally

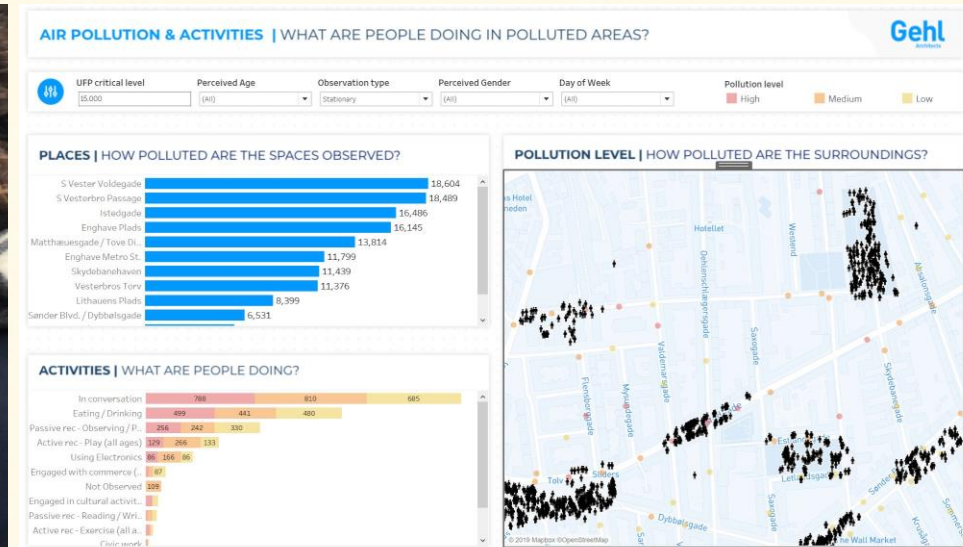
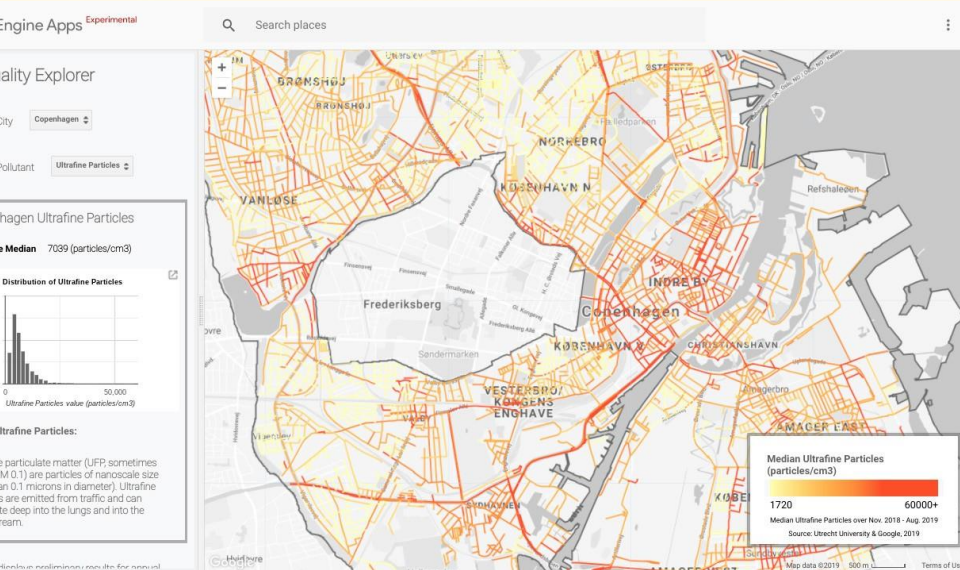
Small children are extremely vulnerable to poor air quality

Small children breathe
up to 4 times as fast as adults
and as a result take in up to

**4 x more
polluted air**



FROM BIG DATA TO THICK DATA (EXAMPLE FROM COLLABORATION BETWEEN GOOGLE, GEHL AND CITY OF COPENHAGEN)



1

Collection air quality data

+

2

Matching with data on lived experience with a focus on children

=

3

Developing insights, local plans and immediate actions

Istedgade
Cph

Before



Shanghai Riverfront

After



1

Public spaces are more important than ever.

2

Health and well-being is once again in the centre of planning & design

3

Make the most out of the positive side effects to Covid – localism



**Making Cities for
People**



Kanton Basel-Stadt

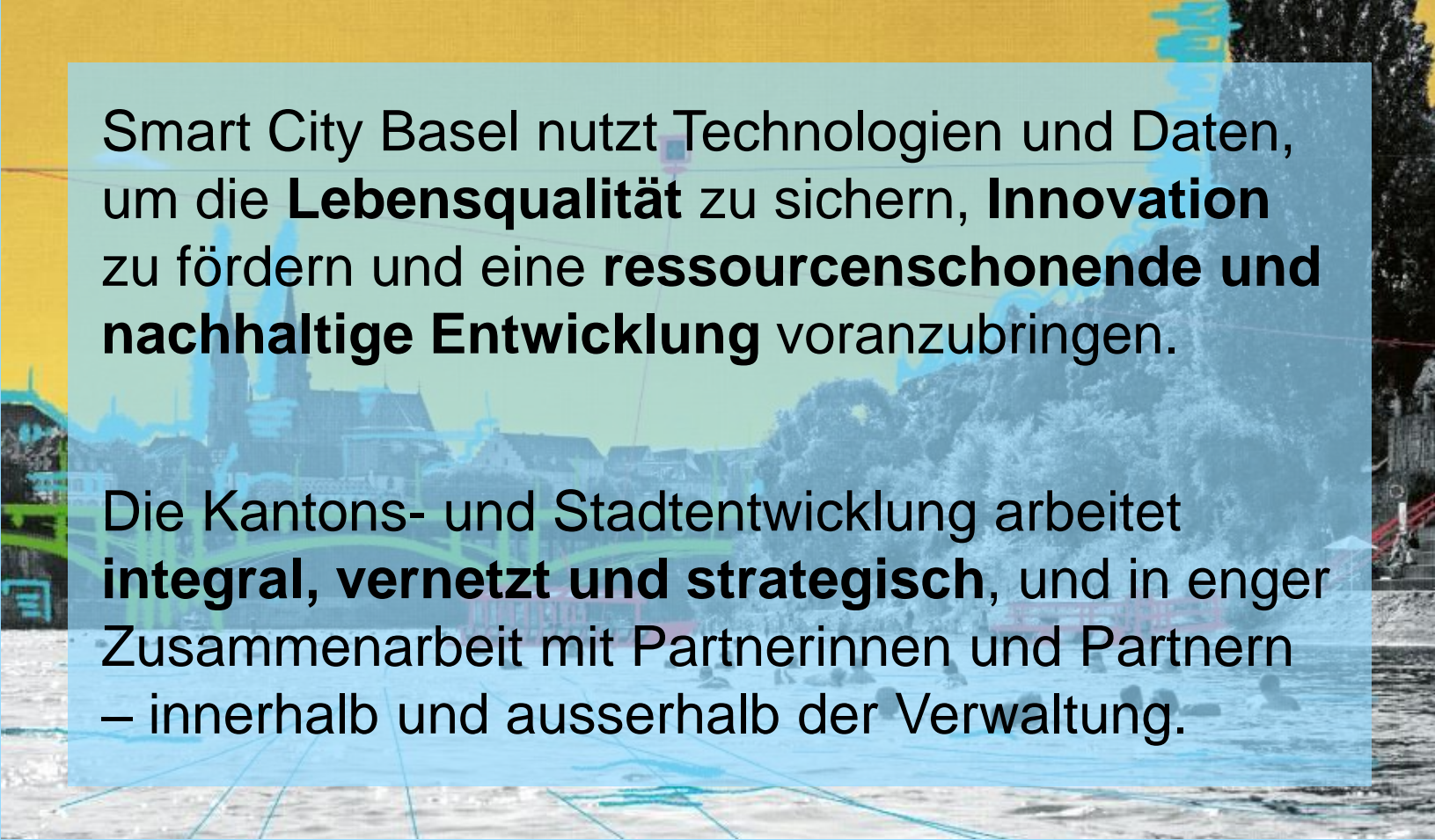
«Smart City Basel – Von der Strategie zu konkreten Projekten»

Smart City Talk, 22. Juni 2021

Lukas Ott, Leiter Kantons- und Stadtentwicklung Basel-Stadt



Strategie Smart City Basel: Zusammenarbeit steht im Zentrum



Smart City Basel nutzt Technologien und Daten, um die **Lebensqualität** zu sichern, **Innovation** zu fördern und eine **ressourcenschonende und nachhaltige Entwicklung** voranzubringen.

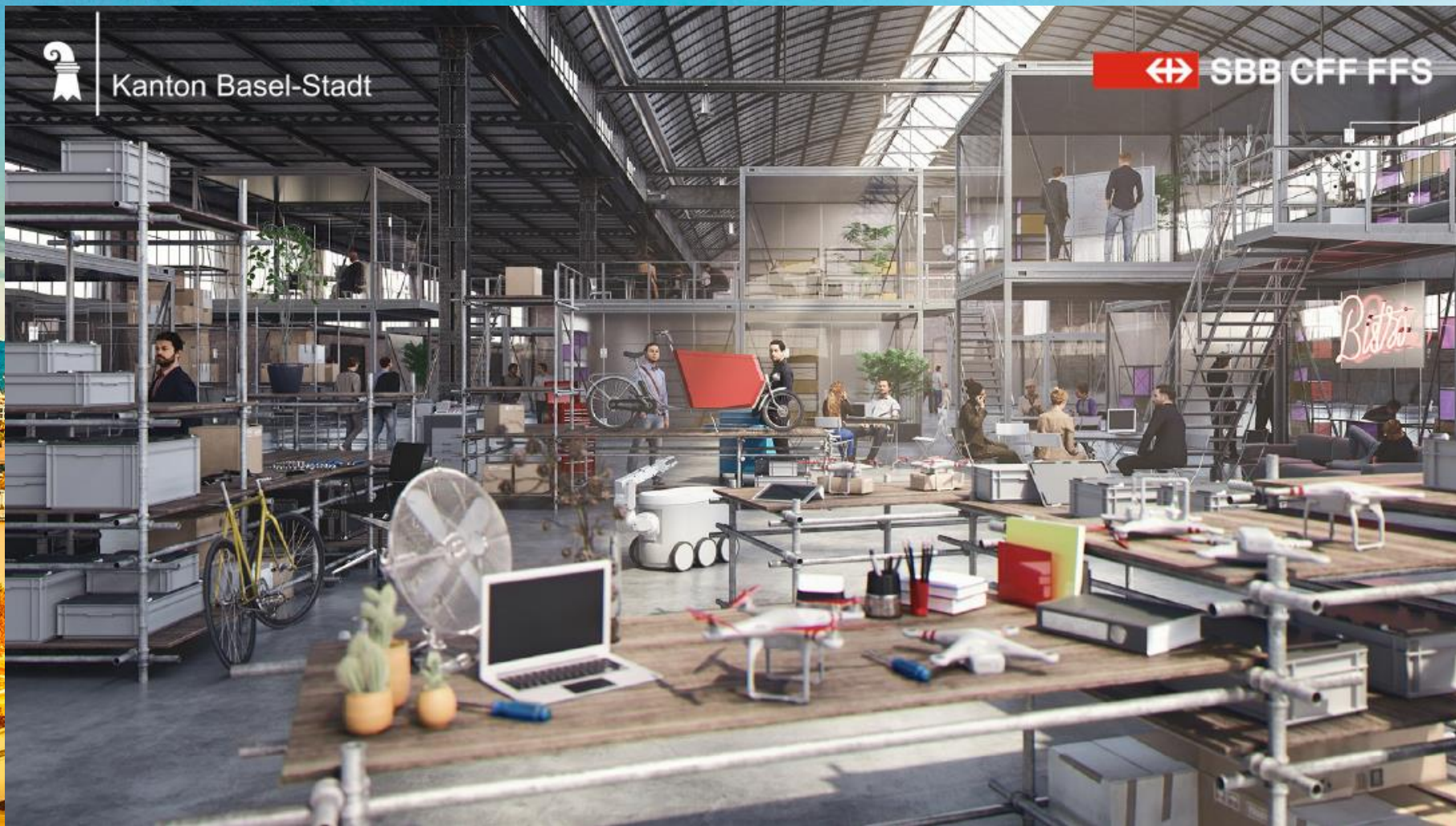
Die Kantons- und Stadtentwicklung arbeitet **integral, vernetzt und strategisch**, und in enger Zusammenarbeit mit Partnerinnen und Partnern – innerhalb und ausserhalb der Verwaltung.

Digitalisierung Smart City Testareal Basel



Bildnachweis: SBB AG

Digitalisierung Smart City Lab Basel



Zusammenarbeit im Kanton Basel-Stadt

konkret:

- **AG Smart City Basel**
- **Werkstattgespräch Smart City Basel**
- **Gemeinsame Projekte**
- **Thema Smart City bei Kantons- und Stadtentwicklung**
- **Fachliches Know-How bei den Departementen und Ämtern**

Zusammenarbeit mit Partnerinnen und Partnern

konkret:

- **Pilotprojekt-Partnerschaften**
- **Partnerschaften im Smart City Lab**
- **Digitaltag Region Basel**
- **Informeller Austausch**
- **Unterstützung von Dialog- und Vermittlungsformaten**

Zusammenarbeit, Austausch und Netzwerke

konkret:

- **Smart Regio Basel**
- **Schweizerischer Städteverband**
- **IG Smart City Schweiz**
- **Smart City Hub Switzerland**
- **DACH-Verband Smart City**
- **OSZE-Städtenetzwerk Smart City**
- **NEXPO/ Smart Inter-City Basel**

Smart City

Beispiel upVolt & Kantonspolizei Basel-Stadt



Präsidiatdepartement des Kantons Basel-Stadt
Kantons- und Stadtentwicklung

Kooperation: upVolt & Kantonspolizei Basel-Stadt

E-Bike-Akkus der Kantonspolizei Basel-Stadt werden von upVolt upgecycelt. In eleganten Powerbanks (s.Bild) erhalten die ausgetauschten Akku-Zellen ein zweites Leben.

Erfolgsfaktoren



04.06.2021

| 1



Vielen Dank für die Aufmerksamkeit!

Smart City Basel
www.smartcity.bs.ch

Smart City Lab Basel
www.smartcitylabbasel.ch

Kantons- und Stadtentwicklung
www.entwicklung.bs.ch